

Biblical Astronomy

March/April 2010

Editor – Robert Scott Wadsworth <> P.O. Box 2272, Oregon City, OR 97045
Phone (503) 655-7430 <> e-mail – starguy1@comcast.net <> Website – www.biblicalastronomy.com

BARLEY REPORT

Nehemia Gordon from Jerusalem, Israel compiled the following Barley Reports on March 12 and March 16, 2010.

Aviv Found in Jordan Valley!

“This morning (March 12, 2010) we found Aviv barley in the Jordan Valley in two fields just north of the Israeli army checkpoint. We took three samplings from these fields and they were 90-100% Aviv. I posted two videos of these fields on Youtube, taken with my new Flip Mino HD video camera:

<http://www.youtube.com/watch?v=MQFFrPPymS4>

<http://www.youtube.com/watch?v=9IBSI2aEoHk>

We also found Aviv barley further south in the Jordan Valley and smaller quantities near Ein Mabua.

Thanks to Devorah Gordon and Shoshanah Waterman for participating in this preliminary Aviv excursion. The main Aviv Search will still go ahead on March 16-17 but what we found so far is already enough to call it for this year. This means the new biblical year will begin on March 17, 2010 at sunset.”

More Aviv Barley Found, Moon Not Sighted

“We looked for the moon from Israel tonight (Mar 16) but did not sight it. With only 0.77% of the illuminated portion of the moon facing earth, visibility was not expected from Israel and our attempted observations confirmed this. Tomorrow evening (Mar 17) will be New Moon Day by default, although we will still carry out observations to confirm its visibility from Israel.

Earlier today we found more Aviv barley, this time in the Northern Negev at three locations in the vicinities of Tel Gama, Nachal Oz, and Kibbutz Erez. Samples of the barley were 80-100% Aviv at the various locations. I have posted two videos taken of the field near Kibbutz Erez on Youtube:

<http://www.youtube.com/watch?v=M-tYfbTBHvs>

<http://www.youtube.com/watch?v=JIAkgJJDMZU>

I have also posted photos of Aviv at www.karaite-korner.org/kknmr.shmtl

The photo below of the Aviv barley found this year is from the Karaite Korner Website.



NEW MOON REPORT

Nehemia Gordon from Jerusalem, Israel compiled the following New Moon Report for the month of March 2010 and the beginning of the First Month on the Biblical Calendar.

“On March 17, 2010 the new moon was sighted from Israel. The moon was sighted from Jerusalem at 17:50 by Nehemia Gordon followed by Shoshanah Waterman, Dan Rose, Ben Rose, Devorah Gordon and Paul Matthew Leisy; from Tel Aviv at 17:56 by David Cachicas followed by Gavriel and Daniela Cachicas; from near Rosh Ha'Ayin at 18:07 by Dina Marcus followed by Avi Marcus, Rick & Janie Callaham, Tod & Jonna Sherard; from elsewhere in Jerusalem at 18:07 by Miri Burgin, at 18:13 by Terry Telligman, and at 18:20 by Paul and Katharina Beattie.”

Photos of the new moon sighted from Jerusalem are posted at www.karaite-korner.org/kknmr.shmtl

The next new moon is expected to be visible from Jerusalem, Israel near sunset on April 15, 2010 when the moon will be 1.39% illuminated and 11.93° above the horizon at five minutes past sunset.

NEW MOONS FROM MARCH 2010 TO APRIL 2011

Below are the dates that the new moons should be visible from Jerusalem for the upcoming year possible heavy. The new moons are a bit extraordinary for this Biblical year. Plus, there are no borderline situations (except for the First Month in 2011). There are normally two or three borderline situations for new moons per Biblical year. In all cases the percentage of illumination and elevation above the horizon are at 5 minutes after sunset on the given date. The abbreviation **ill.** represents the illumination of the moon and **deg.** represents how many degrees the moon is above the horizon (**ah**) at five minutes past sunset. The first day of each month begins at sunset on the Gregorian dates and ends at sunset the next Gregorian day.

2010

March 17	3.00% ill.	18.41 deg.. ah	Starts First Month
April 15	1.39%	11.93° ah	Starts Second Month
May 15	3.02%	17.88° ah	Starts Third Month
June 13	1.83%	11.61° ah	Starts Fourth Month
July 13	4.98%	13.8° ah	Starts Fifth Month
August 11	3.72%	7.6° ah	Starts Sixth Month
September 10	7.4%	10.89° ah	Starts Seventh Month
October 9	4.9%	8.7° ah	Starts Eighth Month
November 7	2.54%	2.54° ah	Starts Ninth Month
December 7	3.77%	15.43° ah	Starts Tenth Month

2011

January 5	1.44%	11.58° ah	Starts Eleventh Month
February 4	2.12%	15.21° ah	Starts Twelfth Month
March 6	2.8%	17.53° ah	Starts Thirteenth Month
April 4	1.01%	9.69° ah	Starts First Month

FEAST DATES FOR 2010

Passover/First Day of the Feast of Unleavened Bread – sunset March 31 to sunset April 1.

Last Day of Unleavened Bread – sunset April 6 to Sunset April 7.

Pentecost (Shavuot) – sunset May 22 to sunset May 23.

Day of Trumpets (Yom Teruah) – sunset September 10 to sunset September 11.

Day of Atonement (Yom Kippur) – sunset September 19 to sunset September 20.

First Day of Feast of Tabernacles (Sukkot) – sunset September 24 to sunset September 25.

Last Great Day (Shemini Atzeret) – sunset October 1 to sunset October 2.

Feast of Dedication or Lights (Hanukkah) – sunset December 1 to sunset December 9.

SATURN AT OPPOSITION

On March 21, 2010 Saturn will be at opposition and at its closest approach to Earth for the year. It will also be shining at its brightest for the year at a magnitude of 0.52.

Chart 517 shows the position of *Saturn*, which represents Satan, in the head of *Bethulah (Virgo)* at the time of its opposition on March 21. In my older versions of this Astronomy program (Starry Night), the picture for this constellation is more accurate as to where its location is against the stars. In those programs, Saturn is shown in the upper left shoulder of the woman.

At any rate, this is an interesting position for Saturn to be in at this time. Saturn will be nearly in the same position on March 31 and will move slowly down through the shoulder during the seven days of the Feast of Unleavened Bread from sunset March 31 to sunset April 7. As a note of interest, *Saturn* passes through the constellation *Virgo* about every 30 years.

You can read of the other significance of what the constellations representing the woman and the seven-headed serpent in the article *The Woman and the Dragon* in the February 2010 issue of *Biblical Astronomy*. Is this the spring that the Great Tribulation begins? We will know within the next three weeks. I still believe that it will come much later, but the celestial events of March and April this year have peaked my interest.

VENUS AND MERCURY IN NEAR CONJUNCTION

Though the planets *Nogah (Venus)* and *Catab (Mercury)* will not actually come into conjunction at this time, they will move close together and be side by side in the early evening sky from April 3 to 7, 2010.

Before *Mercury* catches up to *Venus*, it turns and goes into retrograde motion, just missing conjunction.

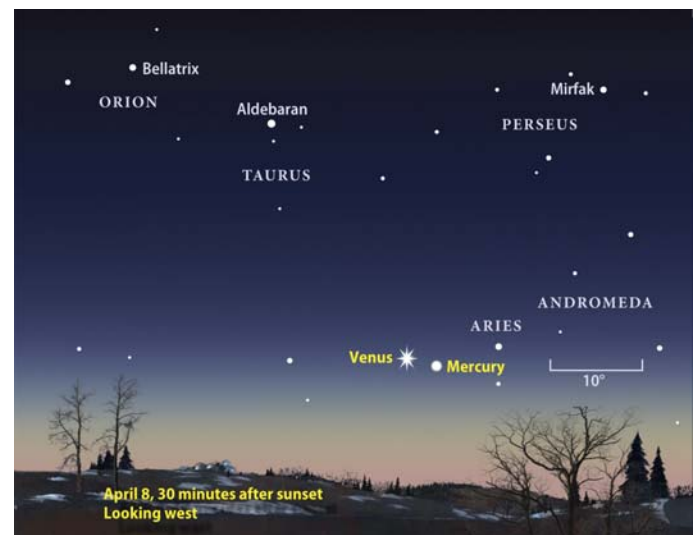
Chart 518 shows the positions of the planets in *Aries* on April 1, 2010 as seen from Jerusalem, and also their paths through the Lamb from April 3 to April 7, throughout the Feast of Unleavened Bread.

Nogah represents the *Bright and Morning Star* *Yahshuah (Jesus Christ)* and *Catab* represents

the archangel *Gabriel* who is the announcing and messenger angel.

The constellation *Aries* represents the Passover Lamb, specifically *Yahshuah Ha Mashiach (Jesus Christ)* our Passover, who gave His blood to redeem us. This constellation is not portraying His crucifixion, but Him, the one who was crucified, returning in glory and breaking the bands that Satan has bound the redeemed with. The front leg of the lamb in the picture in this chart is seen breaking the band that the fish in *Pisces* is bound with, that is attached to *Cetus*, the beast from the sea.. The two fish in the constellation *Pisces* represent the nation of Israel and the Two Houses. This is a unique celestial event to occur in this particular constellation during the Feast.

The chart below shows *Venus* and *Mercury* as they will appear from the United States on April 3, 2010. This chart is from Astronomy.com. The date on the chart, April 8, is a mistype. It should read April 3. If you have an astronomy program, you can check this out for yourself.



MARS PASSES ABOVE THE PRAESEPE

The planet *Adom (Mars)* will pass above the star cluster *Praesepe*, also known as the Beehive Cluster and designated in the Messier Catalog as M44, in the constellation *Cancer*.

Adom passes this cluster about every two years. One of the representations of the planet *Adom (Mars)* is the archangel and warrior angel *Michael* who fights for and protects the nation of Israel. Do a word search on *Michael* in the Bible to see that this is so. The Sign and constellation *Cancer* portrays a place of refuge or protection in

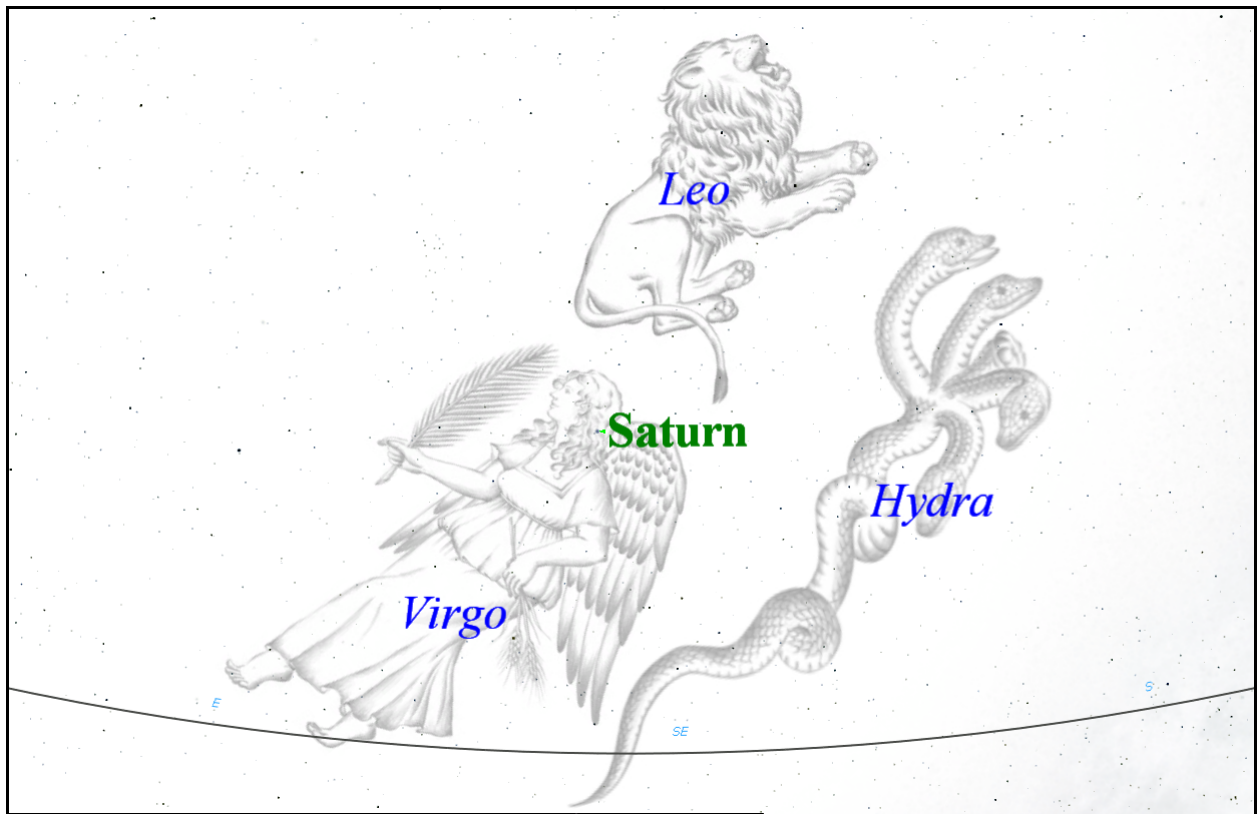


Chart 517 – Saturn at Opposition in *Bethulah* (Virgo) on March 21, 2010. This chart is similar to Chart 516 in the February newsletter. The planets were not turned on when I did that chart for March 31, 2010, but Saturn will be very close to the same position as it is seen here at that time.

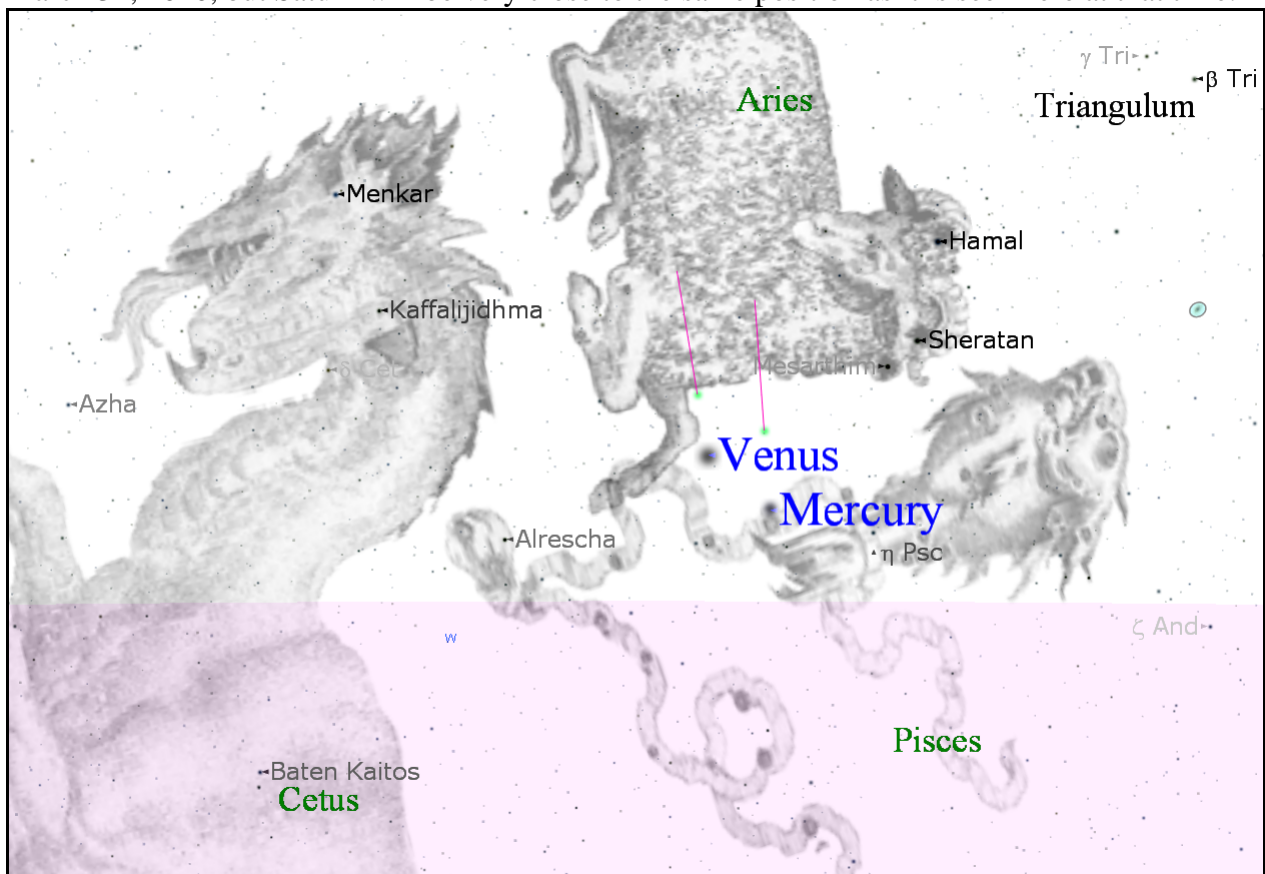


Chart 518 – Paths of Venus and Mercury through Aries from April 1 to April 7, 2010. Where the planets are labeled is where they will be on April 1. The paths starting at the green dots above the label for Venus are the paths of the two planets from April 3 to April 7, 2010.

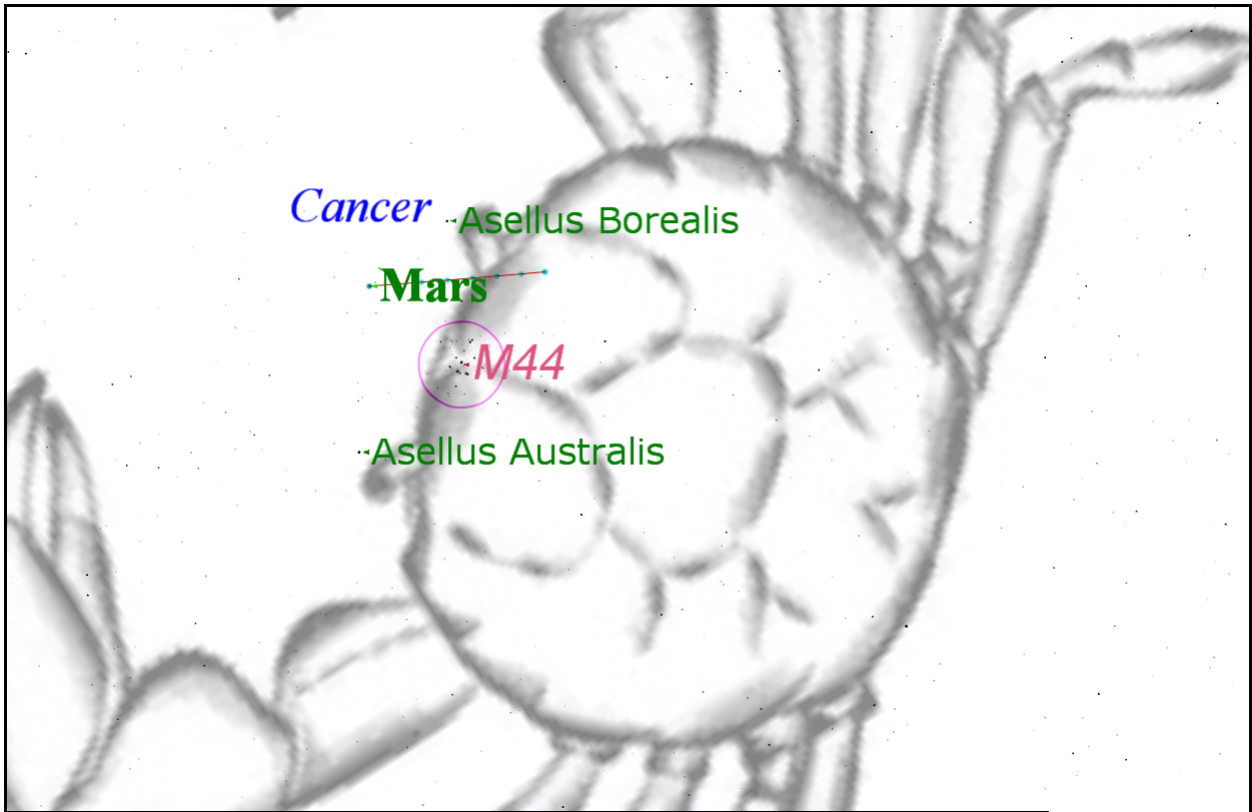


Chart 519 – Path of Mars above the Praesepe from April 13 to April 20, 2010. On this chart, Mars is moving from right to left on the line representing its path from April 13 to 20.

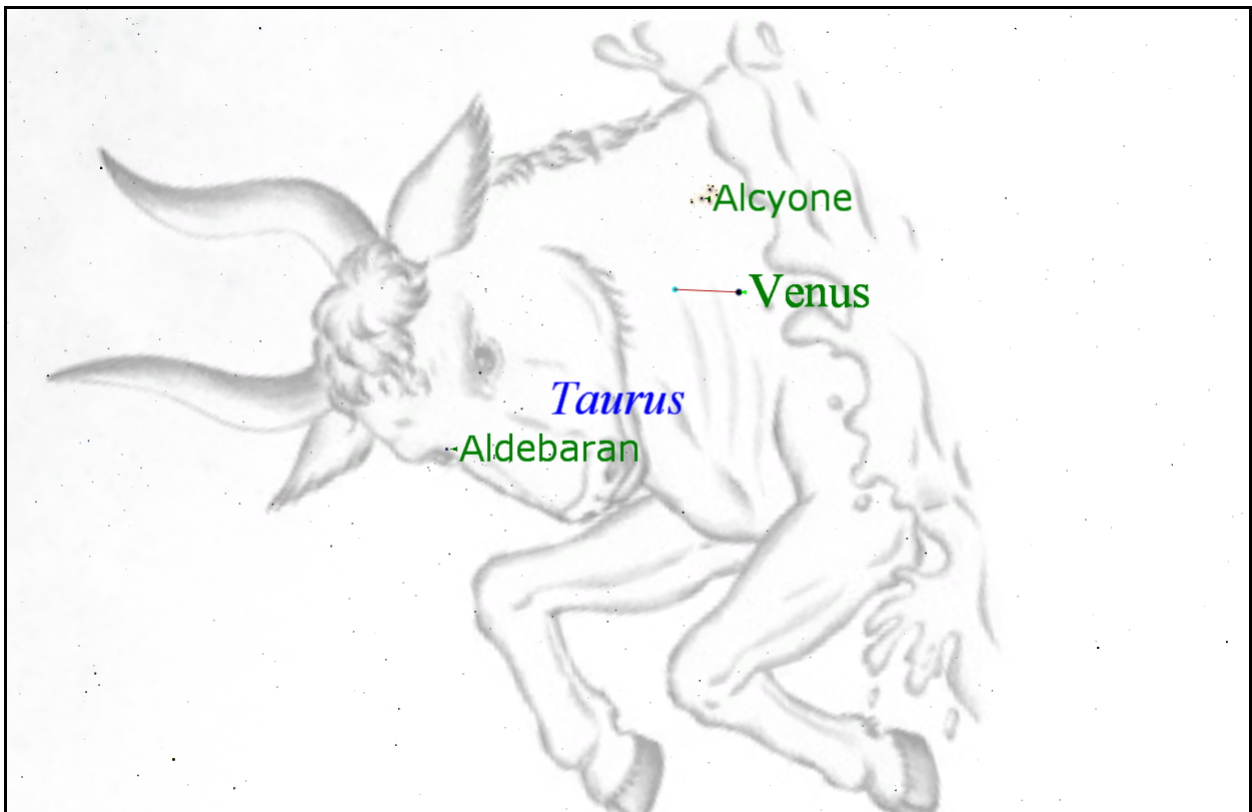


Chart 520 – Path of Venus below the Pleiades from April 23 to April 25, 2010. On this chart, the black dot representing Venus is where Venus will be on April 23, and the end of the path to the left is where Venus will be on April 25.

times of trouble for the sheepfold belonging to Yahshuah, the Great Shepherd (See the article on Auriga, which is the feature constellation this month concerning our Great Shepherd). In ancient planespheres *Cancer* is not seen as a crab, but as a type of coral with sheep pens to protect the flock.

The name *Praesepe*, which is a well-known star cluster in *Cancer*, means *a multitude* or *offspring*. *Praesepe* has also been interpreted as *a manger*, which is a trough the flock feeds out of. It represents the multitude and offspring (those born from above) of the Great Shepherd Messiah who feeds His sheep.

The star cluster lies between two stars, Asellus Borealis (the Northern Ass) and Asellus Australis (the Southern Ass). These represent two donkeys. Donkeys are used in sheep herds to protect the sheep from predators. This practice has been in use since ancient times. At this particular time, the warrior angel Michael is also dropping by to protect the sheepfold.

Chart 519 shows the path of *Mars* in the constellation *Cancer* from April 13 to April 20 as it passes over *Praesepe*. See the Biblical Astronomy DVD set for further information on the Sign and constellation *Cancer* and on *Adom (Mars)*.

PRAISE PREPARED FOR THE CONQUERER

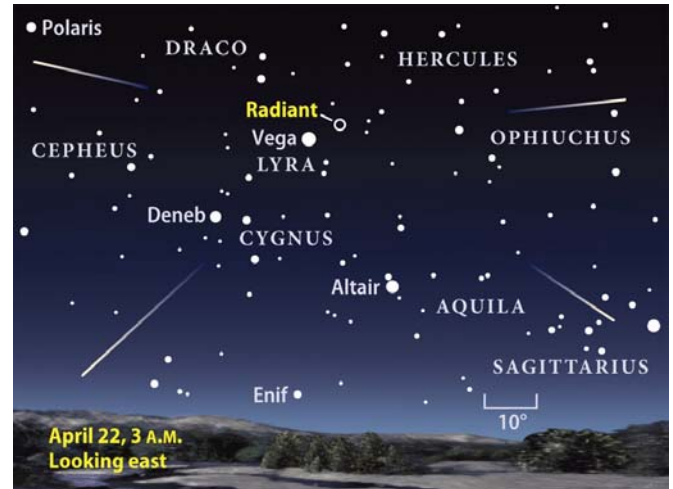
It is that time of the year again for the Lyrid Meteor Shower. This shower puts on a good show now and again. Astronomers are not predicting an unusually strong Lyrid this year, though it may produce as many as 15 to 25 meteors per hour at its peak. In 1982 this shower put on a spectacular show for a short time during its peak when it rained down meteors at a rate of 90 meteors per hour. That is a high rate of meteors for this particular shower.

If you are up in the wee hours of the morning before sunrise on April 22, it may be worthwhile to take a gander above the eastern horizon if you have clear skies.

The radiant of this shower is in the constellation *Lyra*, *the harp*. The main theme for this constellation is *Praise prepared for the conqueror*, such as Rev. 11:17; 19:7; Psalm 21:1, 8, 10-13; the conqueror here being Yahshuah. The brightest star in this constellation is *Vega*, which means *He shall be exalted*.

When I see meteors shoot forth from Lyra I think of praises going forth before Him and to Him.

The chart below shows the radiant of the shower in the constellation *Lyra* and near the star *Vega* at the time of its peak in the early morning hours of April 22.



VENUS PASSES BELOW THE PLEIADES

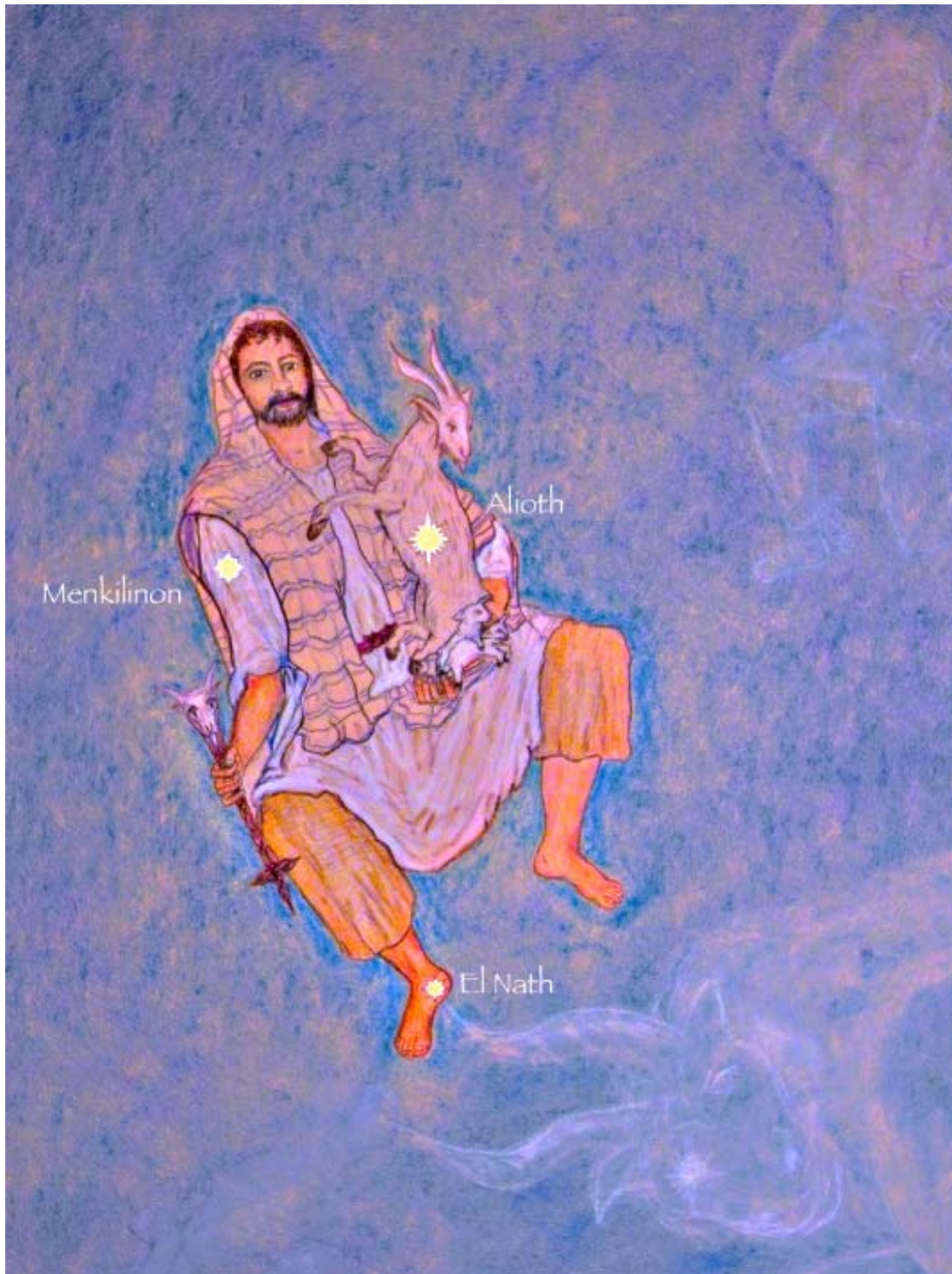
The *Bright and Morning Star* will visit the seven angels of the seven congregations from April 23 to 25, 2010. Be prepared! Perhaps it is a good time to read Revelation chapters 1-3 again.

Chart 520 shows the path of *Nogah (Venus)* passing south of the *Pleiades* from April 23 to April 25, 2010. Alcyone is its main star. The *Pleiades* represents *the congregation of the Judge* and/or *the seven stars* representing the seven angels of the seven congregations in Revelation 1:20.

Nogah passes this way every year. Every eight years to the day, *Nogah* ascends up and passes through this cluster. Such was the case on April 3, 1996 and April 3, 2004. And such will be the case again on April 3, 2012; April 3, 2020; April 3, 2028; April 3, 2036; and April 3, 2044 which is 3.5 years from the Fall Feast dates in 2047. Just giving a bit of a hint here. I just know some will make mention that April 3, 2012 is also 3.5 years before the Fall Feast dates in 2015. We will just have to wait and see how things play out. That is if all heck doesn't break out in the next three weeks. Perhaps we will see the health care bill go down in flames, lol. I must be getting tired.

I was going to do an article on the movement of the Earth's axis caused by the Chilean earthquake, but I ran out of space. It wasn't anything drastic or much to be much concerned about. I think we have stopped wobbling by now.

May Yahweh bless you and protect you.



AURIGA (the Shepherd)

Safety for the redeemed in the day of wrath

Auriga is a decan constellation to the Sign Taurus.

Ancient Names for this constellation

Auriga (Heb.) – the shepherd. Auriga is from a Hebrew root, which means a shepherd.

Complementing scriptures to this constellation picture

Isaiah 40:10, 11 (RV) – “Behold the Lord God (Adonai) will come as a mighty one, And His arm shall rule for Him: Behold, His reward is with Him, And His recompense before Him. **He shall feed His flock like a shepherd, He shall gather the lambs in His arm, And carry them in His bosom, And shall gently lead those that give suck.**” This is exactly what this picture of *Auriga* is portraying. The Shepherd with the she goat and her sucklings in His arm and bosom. See also Ezek. 34:22; 37:24; and Jer. 23:4.

Stars in *Auriga* and meanings of their Names

Alioth (Heb.) – *a she goat, or ewe.* The modern Latin name for this star is *Cappella*, which means the same.

Menkilinon (Chald.) – *band or chain of the goats, or ewes.*

Maaz (Arab.) – *flock of goats.*

El Nath (Arab.) – *wounded or slain.* This star is in the heel of *Auriga*, which the horn of Taurus is piercing.

Aiyuk (Arab.) – *wounded in the foot.*

Gedi (Heb.) – *the kid, or kids.*

From E.W. Bullinger’s *The Witness of the Stars*, page 135 – “Can there be any mistake as to who this Shepherd is? for the bright star in his right foot is called *El Nath* (like another in ARIES), which means *wounded or slain*. This is He, then, who was once bruised or wounded in the heel. He is "the GOOD Shepherd," who gave His life for the sheep (John 10:11), but He was "the GREAT Shepherd" brought again from the dead (Heb 13:20); and is now the CHIEF Shepherd (1 Peter 5:4) seen in the day of His coming glory. Another star emphasizes this truth, for it is named *Aiyuk*, which also means *wounded in the foot*.”

The Shepherd here is seen getting wounded in the foot by the horn of the Reem. This does not portray the wounding by the enemy, but rather by the wrath of God, since it is in the picture of the reem that portrays God’s wrath being poured forth. The goat and her kids are looking down on the reem affrighted. But the Great Shepherd is caressing them in His arms and in His bosom, protecting them from the wrath being poured forth from God to His enemies. The Messiah took our punishment for us, and those who believe in Him (Y’shua, Jesus) and confess Him with their mouth and believe that God (Yahweh Elohim) raised Him from the dead, are not appointed to the wrath of God.

One of the changes that we made with this constellation from the Ulugh Beigh’s version, is that we put a sceptre with the head of a lamb on top and a cross on the bottom. This sceptre is after the picture shown of this constellation from the Temple of Denderah. E.W. Bullinger in his *The Witness of the Stars*, pp.135 & 136 writes:

“The Latin word *Auriga* means a *coachman or charioteer*, the band in his right hand being taken as his *reins*. But the incongruity of a *charioteer* carrying a she-goat, and nursing two little kids, never struck them; nor did the fact that he has no chariot and no horses! When man blunders in the things of God, he does it thoroughly! In the Zodiac of Denderah the same truth was revealed more than 4,000 years ago; but the Man, instead of carrying the sheep, is carrying a sceptre, and is called *Trun*, which means *sceptre or power*. But this is a strange sceptre, for at the top it has the head of a goat, and at the bottom, below the hand that holds it, it ends in a cross! With the Egyptians the cross was a sign of *life*. they knew nothing of "the death of the cross." Here, then, we see *life* and *salvation* for the sheep of His flock when He comes to reign and rule in judgment. The truth is precisely the same, though the presentation of it is somewhat varied.”

This is a great portrayal of Messiah’s love and sacrifice for us. He is our “Great Shepherd” who gave his life and blood for us to be saved from the wrath to come and also to be given eternal life so we would be forever with Him in His Kingdom to come. Praise Yahweh! And Praise Yahshuah Ha Mashiach (Jesus Christ). Through His blood we have been redeemed. Praise and glory be to Him forevermore!